



Diamant - D



Founded in 1975, the company very quickly became part the group of leading Italian companies in the field of Diamond tools. Since the beginning, DIAMANT-D has been renowned for its reliability and commercial support and has always concentrated on giving a good customer service, which has included developing a wider range of products.

We are proud of the DIAMANT-D organisation which has had a good reputation since the Company's inception. The methods and controls within the Company are monitored by computer technology and have been supported by our research laboratory for many years.



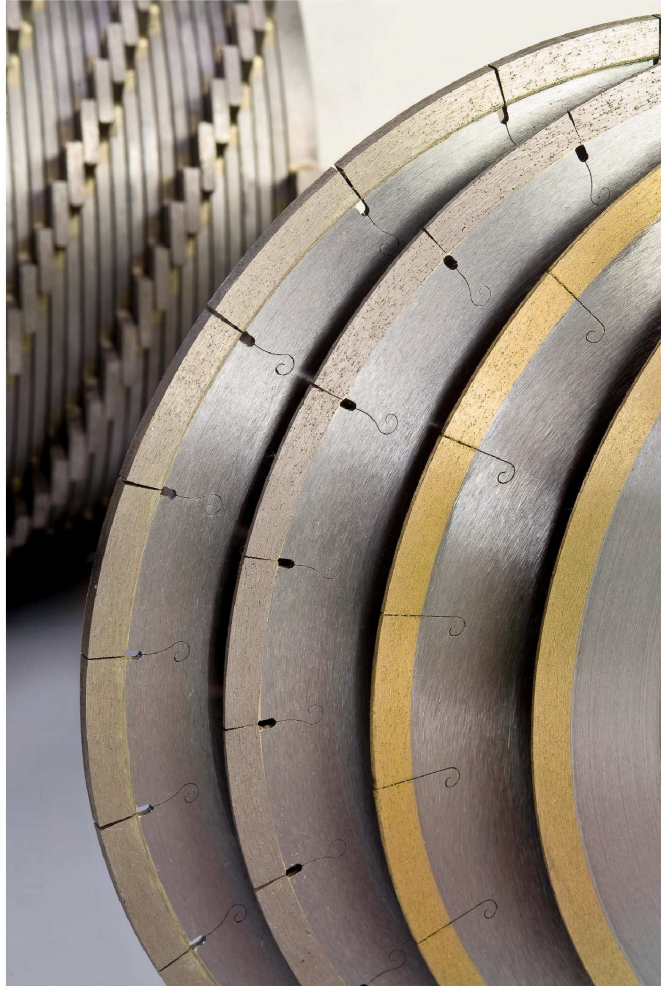
**Via Palladio, 40
35010 S. Giorgio in Bosco (PD) - ITALY
Tel. +39 049-5996755 - Fax +39 049-5996401
Web: www.diamant-d.com
Info: info@diamant-d.com**



diamond tools for stone, construction and ceramic since 1975

 **Diamant-D**

CUTTING BLADES DIAM. 300 mm.



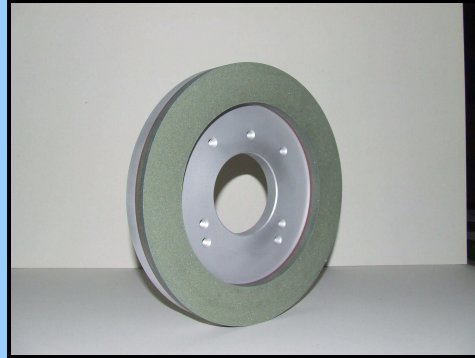
diamond tools for stone, construction and ceramic since 1975

 **Diamond-D**

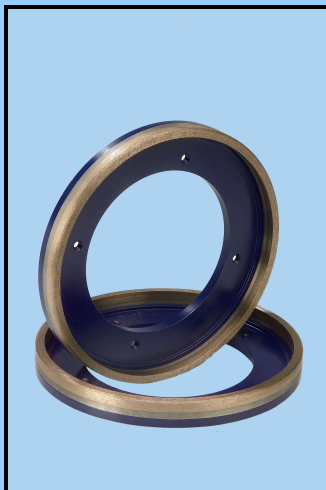
SQUARING PRODUCTS



TANGENTIAL CALIBRATING WHEELS
DIAM. 320 x 60/100 mm.



RESIN BOND CALIBRATING WHEELS
DIAM. 250 mm.



**CONTINUOUS RIM CALIBRATING WHEELS DIAMETER 300 mm FOR SQUARING MACHINES
(B.M.R., ANCORA, BRETON, SIMEC).**

DIAMETER: 300 mm.
DIAMOND RIM THICKNESS: 12 mm
DIAMOND HEIGHT: 14 mm.
AVAILABLE GRITS: **D427 - D301 – D252 – D181.**





DOUBLE CROWN CALIBRATING WHEELS DIAMETER 300 mm FOR SQUARING MACHINES (B.M.R., ANCORA, BRETON, SIMEC).

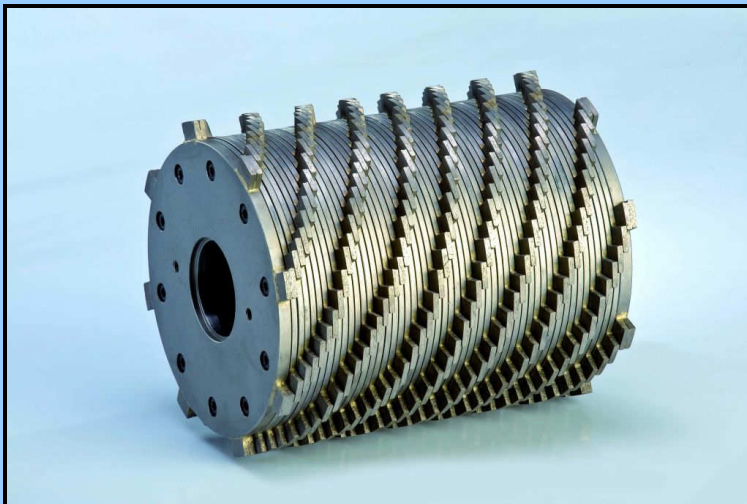
DIAMETER: 300 mm.

DIAMOND RIM THICKNESS: 10+10 mm

DIAMOND HEIGHT: 14 mm.

AVAILABLE GRITS: **D427 - D301 - D252 – D181.**

TOOLS FOR CALIBRATING-POLISHING



“PACK RINGS” DIAMOND ROLLERS, available with 5 or 8 segments per each ring.



DIAMOND ROLLERS WITH NO.5 COILS FOR CALIBRATING MACHINES SIMEC, CE.MAR., ANCORA and so on.

(n.1 roller for each head).

DIAMOND ROLLER DIAMETER: 242 mm.

DIAMOND LENGTH (coils length): it depends on the tiles size.

for tiles 30x30/30x60: diamond length 295 mm.

for tiles 40x40: diamond length 395 mm.

for tiles 60x60: diamond length 595 mm.

DIAMOND COILS THICKNESS: 9 mm.

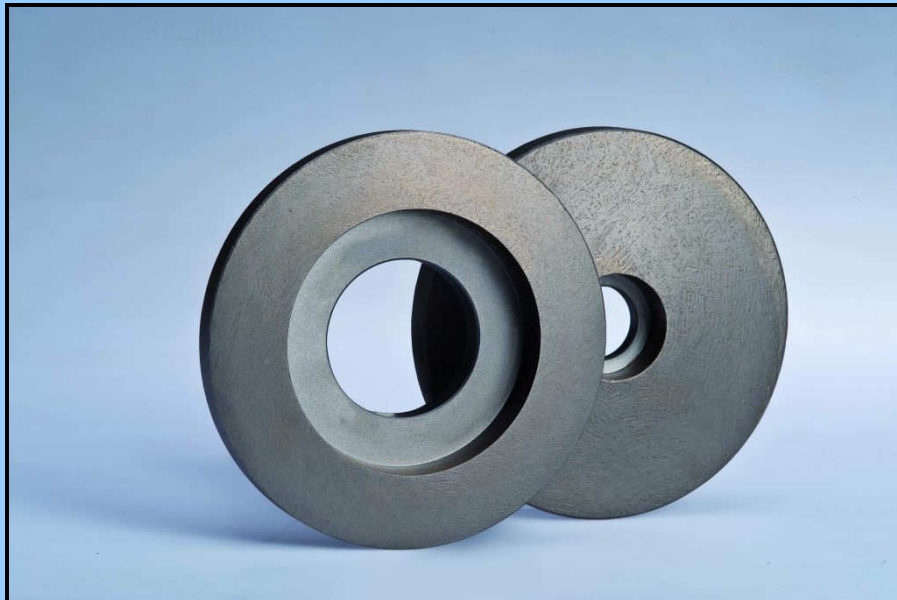
DIAMOND COILS HEIGHT: 12 mm.

AVAILABLE GRITS: **rough, medium and fine.**

REMOVAL CAPACITY: 0,1/0,2 mm.

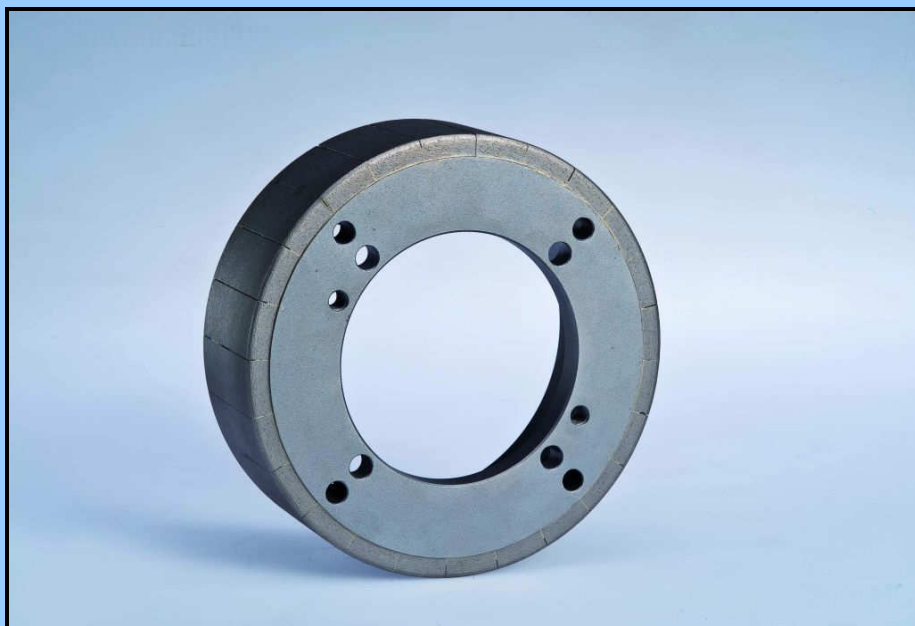


Aquila satellite wheels diam. 159 mm, continuous crown
wide 30 mm x height 15 mm or wide 60 mm x height 10 mm.
Available grits: **60/80/100/120.**



CALIBRATING WHEELS MC8 FOR BRETON MACHINE.

DIAMETER: 180 mm.
TOTAL WIDE: 60 mm
DIAMOND HEIGHT: 10 mm.
AVAILABLE GRITS: **60/80/100/120.**
REMOVAL CAPACITY: 0,1 mm per each head.



CALIBRATING WHEELS MC10 FOR ANCORA MACHINE.

DIAMETER: 200 mm.
TOTAL WIDE: 40/24 mm
DIAMOND HEIGHT: 10 mm.
AVAILABLE GRITS: **60/80/100/120.**
REMOVAL CAPACITY: 0,1 mm per each head.

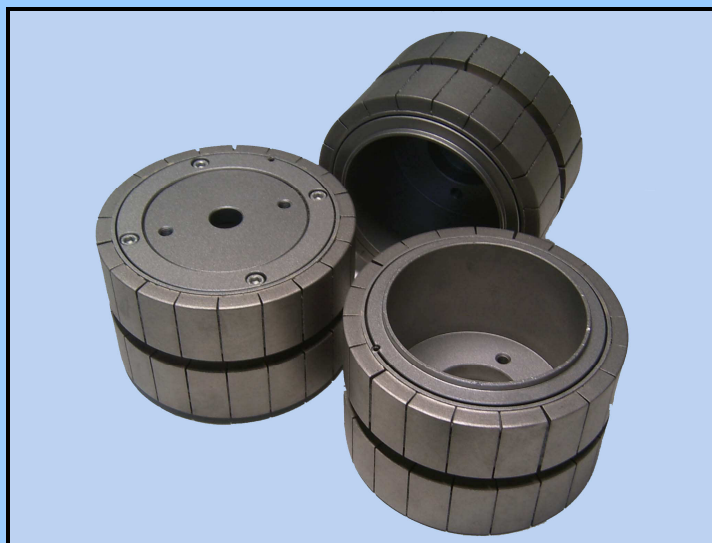




GRINDING WHEELS DIAM.150 FOR POLISHING MACHINE CE.MAR./SIMEC and so on.
Continuous rim with resin filling.
(no.5 wheels for each head).

DIAMETER: 150 mm
CONTINUOUS RIM THICKNESS: 20 mm.
DIAMOND HEIGHT: 15 mm.
AVAILABLE GRITS: **60/80/100/120.**





CYINDRICAL DIAMOND WHEELS FOR CE.MAR. POLISHING MACHINE.
(no.5 wheels for each head).

DIAMETER: 150 mm.
TOTAL DIAMOND WIDE: 90 (40+10+40) mm.
DIAMOND HEIGHT: 10 mm.
AVAILABLE GRITS: **60/80/100/120.**



“PACK RINGS” CALIBRATING ROLLERS MC8 ON ROTATING HEADS.
(no.8 wheels for each head).

DIAMETER: 180 mm.
TOTAL WIDE: 60 mm
DIAMOND HEIGHT: 12 mm.
AVAILABLE GRITS: **60/80/100/120.**
REMOVAL CAPACITY: 0,2 mm per each head.

DIAMOND BRICKS



DIAMOND FICKERT FOR POLISHING MACHINE (PEDRINI, ANCORA, CE.MAR. and so on).
(no. 6 or 7 fickert for each head).

TOTAL LENGTH: 140 mm.

TOTAL WIDE: 60 mm.

DIAMOND HEIGHT: 5 mm.

AVAILABLE GRITS: **36/46/60/80/100/120.**



PROFILING WHEELS TYPE “B”



PROFILING WHEELS TYPE “B” DIAM. 250 MM, RADIUS 10/12/14 OR 16 MM.